

# Choosing Routers

---

## ISP Workshops



These materials are licensed under the Creative Commons Attribution-NonCommercial 4.0 International license  
(<http://creativecommons.org/licenses/by-nc/4.0/>)

Last updated 22<sup>nd</sup> March 2015

# Acknowledgements

---

- ❑ This material originated from the Cisco ISP/IXP Workshop Programme developed by Philip Smith & Barry Greene
  - This presentation was originally authored by Mark Tinka
- ❑ Use of these materials is encouraged as long as the source is fully acknowledged and this notice remains in place
- ❑ Bug fixes and improvements are welcomed
  - Please email *workshop (at) bgp4all.com*

Philip Smith

# How to Choose a Router

---

- Presentation covers typical routers being used by network operators
  - These are typical for mid to large operators, with 1Gbps and higher capacity backbones
  - “Your mileage may vary”

# Border Router

---



- ❑ Cisco ASR9001
- ❑ Juniper MX80





# Core Router

---

- Cisco CRS 8-slot



# Core Switch

---

## ▣ Cisco C6880-X-LE



# Production (Service) Router

---

- Cisco ASR1002-X



# Production (Service) Switch

---

- Cisco 3650-48TQ-E



# Peering Router

---



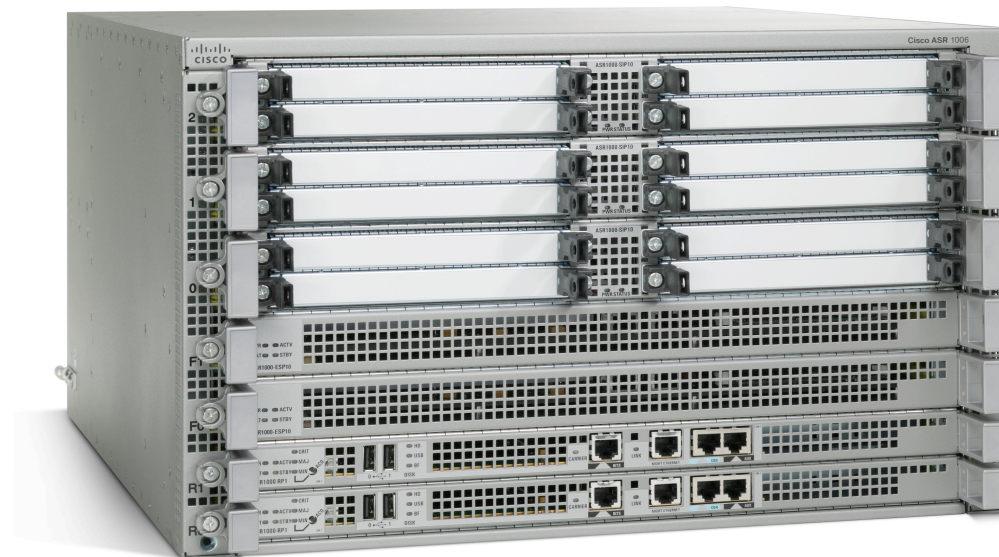
- ❑ Cisco ASR1002-X
- ❑ Juniper MX80
- ❑ Cisco ASR9001



# NAT64/DNS64/464XLAT router

---

## ▣ Cisco ASR1006



# Edge Router

---

## ▣ Juniper MX480





# Edge Switch

---

## ▣ Juniper EX4550





# Route Reflector

---

- ❑ Cisco CSR1000v software
- ❑ HP ProLiant DL360p Gen8 1U servers



# Metro-E switch

---

- Cisco ME3600X-24FS



# Terminal Server

---

## □ Cisco 2901



# SDH Edge Router

---

## ▣ Cisco ASR1006

